



### PLUS

For intensive use, for private and public solutions  
Double built-in flashing light, two-coloured green/red

Double spring (6 m model) to counter balance movement and make it more fluent

Universal box: bar can be installed both right or left

Possibility to set different speed in opening and closing motion

With 24 Vdc CT10224 control unit with integrated display

Encoder for obstacle detection and immediate run inversion




Robust gears and levers for reliable functioning over time

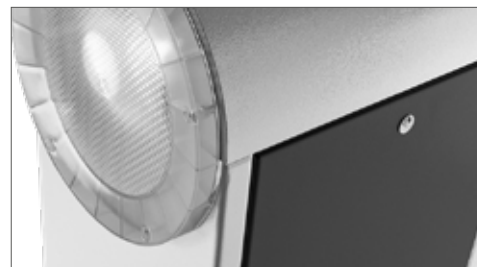
Energy saving mode

Integrated receiver

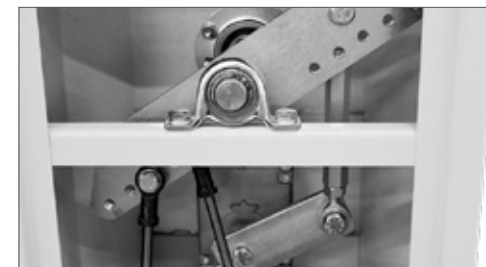
Anti-UV rays epoxy power coating

### MODELS

CODE	DESCRIPTION	PCS PALLET
 <b>ALT324KF</b>	Barrier body, 24 Vdc motor, with control unit in box, with integrated receiver, with encoder, double built-in led flashing light. For 3 m bar, connection for bars included	5
 <b>ALT424K</b>	Barrier body, 24 Vdc motor, with control unit in box, with integrated receiver, with encoder, double built-in led flashing light. For 4 m bar, connection for bars included	8
 <b>ALT624K</b>	Barrier body, 24 Vdc motor, with control unit in box, with integrated receiver, with encoder, double built-in led flashing light. For 6 m bar, connection for bars included	5



Double Led flashing light



Metallic gear + shock resistant motor (ALT624K)



CT10224 control unit with integrated display



New bar of 5 m for ALT4K

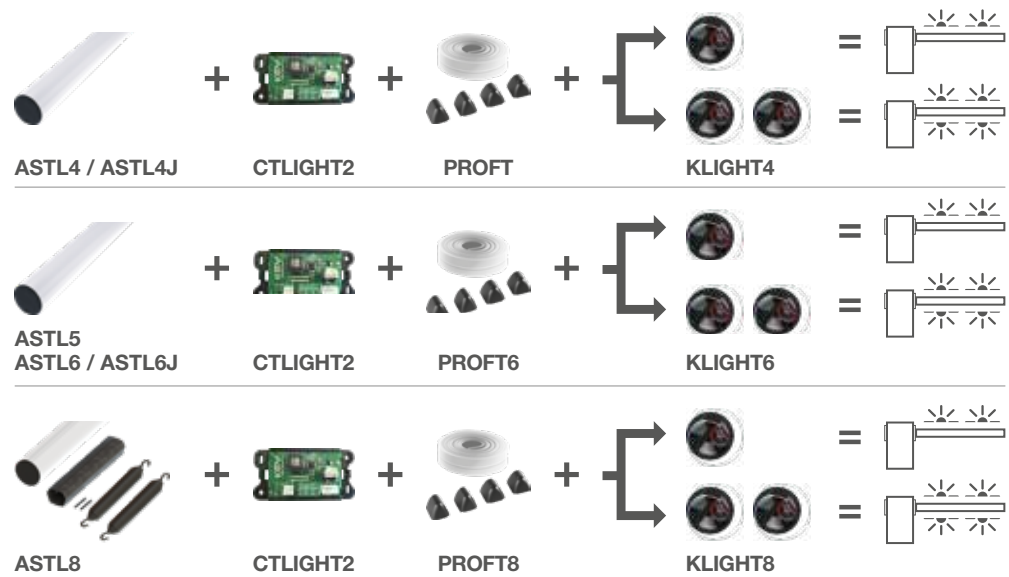
## TECHNICAL DATA

		ALT324KF	ALT424K	ALT624K
<b>MECHANICAL DATA</b>				
torque	Nm	40	200	305
working cycle	%	50	80	80
opening time at 90° **	sec	1	3,5	6/12*
<b>ELECTRICAL DATA</b>				
control board		CT10224F	CT10224	CT10224
power	Vac	230	230	230
consumption	A	1,6	1,3	1,3
absorbed power	W	330	300	300
integrated lights		yes	yes	yes
<b>GENERIC DATA</b>				
protection degree	IP	54	54	54
dimensions (L - D - H)	mm	400 - 280 - 1188	320 - 220 - 1110	400 - 280 - 1188
weight	kg	62	47	67
working temperature	°C	-20 + 55	-20 + 55	-20 + 55
maximum bar length	m	3	4	6 *(8 mt)

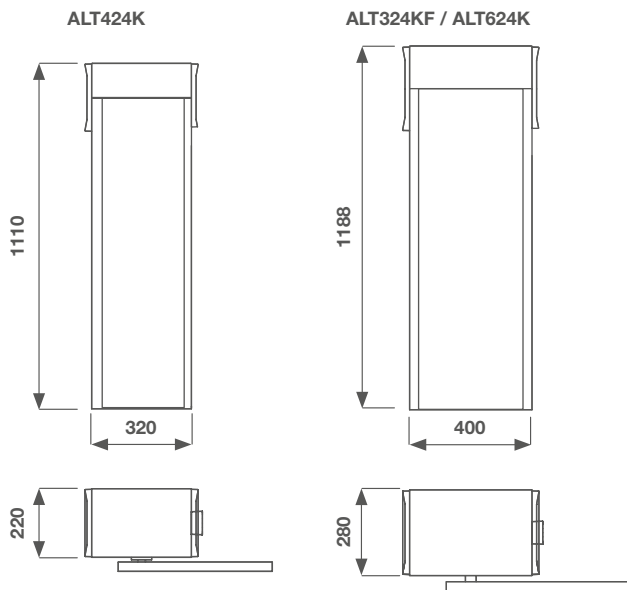
\* with 8 m bar

\*\* without accessories

## HOW TO CHOOSE THE LED LIGHT SYSTEM FOR BARRIERS



## DIMENSIONS



BAR	CODE	CLEAR OPENING (LP)
3 m	ALT324KF + AST3F	2740 mm
4 m	ALT424K + ASTL4	3780 mm
4 m	ALT424K + ASTL4J	3780 mm
5 m	ALT424K + ASTL5	4780 mm
6 m	ALT624K + ASTL6	5640 mm
6 m	ALT624K + ASTL6J	5640 mm
8 m	ALT624K + ASTL8	8040 mm

## ALT324KF ACCESSORIES



**AST3F**  
Aluminum tubular bar L=3 m Ø 60 mm (not fitting with accessories)

PC 1



**CP-BR6**  
Anchorage plate with rag bolts

PC 1

## ALT424K ACCESSORIES



**ASTL4**  
Aluminum bar L=4 m Ø 60 mm (without accessories)

PC 1



**ASTL4J**  
2+2 m aluminum bar Ø 60 mm + joint

PC 1



**AS-SNO3**  
Aluminum bar with articulated joint (max. L. 3 m) preassembled. Only for ALT424K

PC 1



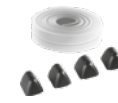
**ASTL5\***  
Aluminum bar L=5 m Ø 60 mm (without accessories)

PC 1



**CP-BR**  
Anchorage plate with rag bolts

PC 1



**PROFT**  
Flexible rubber profile, 8 m and plug set for ASTL4 (transparent)

PC 1

## ALT624K ACCESSORIES



**ASTL6**  
Aluminum bar L=6 m Ø 90 mm (without accessories)

PC 1



**ASTL6J**  
3+3 m aluminum bar, Ø 90 mm + joint

PC 1



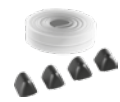
**ASTL8\*\***  
4,2+4,2 m aluminum bar, Ø 90 mm + joint + springs

PC 1



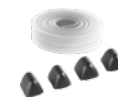
**CP-BR6**  
Anchorage plate with rag bolts

PC 1



**PROFT6**  
Flexible rubber profile, 12 m and plug set (transparent)

PC 1



**PROFT8**  
Flexible rubber profile, 16 m and plug set (transparent)

PC 1

## ACCESSORIES



**APFX**  
Fixed support RAL 7047

PC 1



**APM**  
Mobile support RAL 9010

PC 1



**CTLIGHT2**  
Control unit for KLIGHT

PC 1



**KLIGHT4**  
Led lights for 4 m bar

PC 1



**KLIGHT6**  
Led lights for 5 and 6 m bar

PC 1



**KLIGHT8**  
Led lights for 8 m bar

PC 1



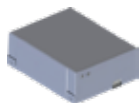
**LOOP2**  
Magnetic sensor, one coil, one outputs

PC 1



**SKIRT2**  
Kit fence, length 1,7 m

PC 1



**KBP**  
Battery back-up kit

PC 1



**KITFIXBATT**  
Fixing batteries brackets

PC 1



**AD**  
Red reflecting adhesive stripes

PC 1



**TWIN**  
Interface for master/slave function

PC 1



**SNAP**  
Snap-off system for ALT324KF

PC 1

\* for ASTL5 the combining of PROFT6, KLIGHT6 and APFX is recommended

\*\* for ASTL8 the combining of APFX is recommended